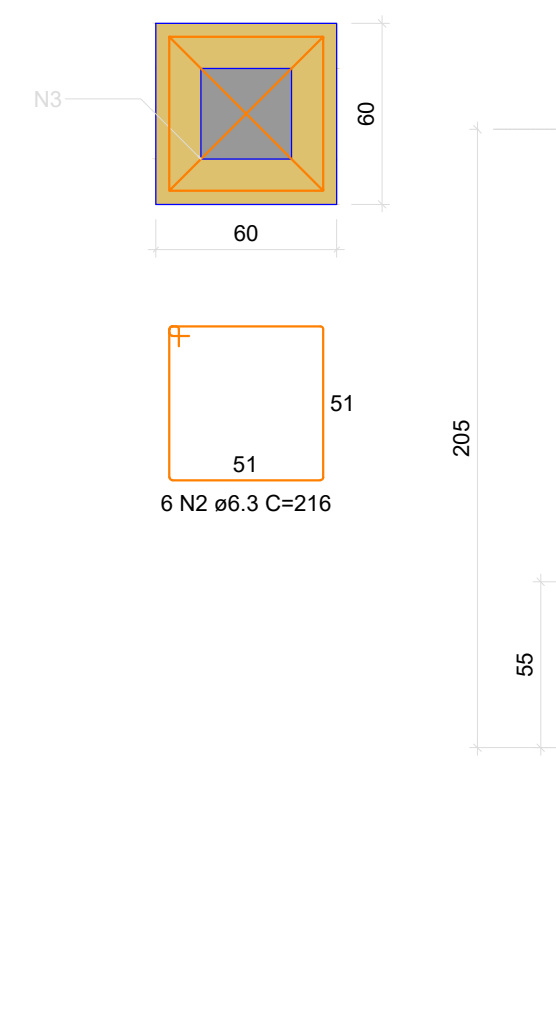
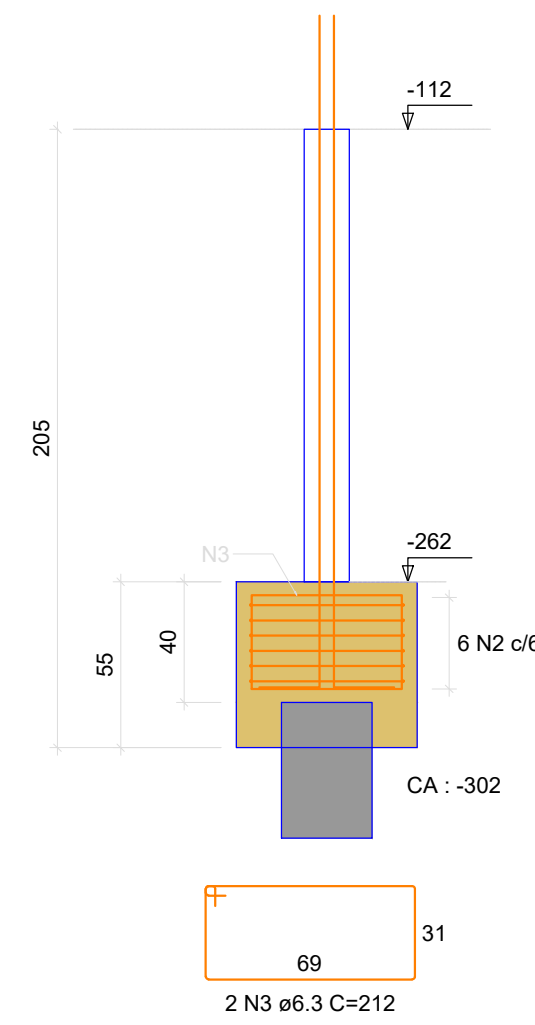


B5=B6
1xQ30
PLANTA
ESC 1:25

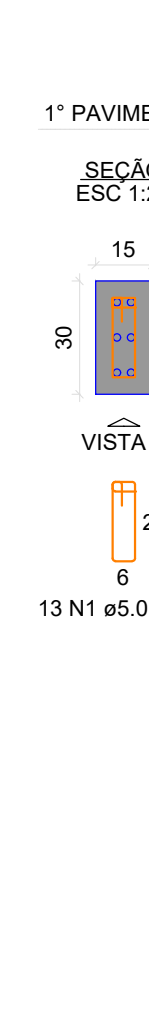


CORTE
ESC 1:25



P5=P6

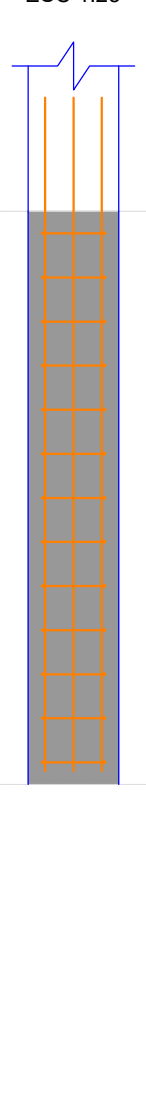
1º PAVIMENTO - L1



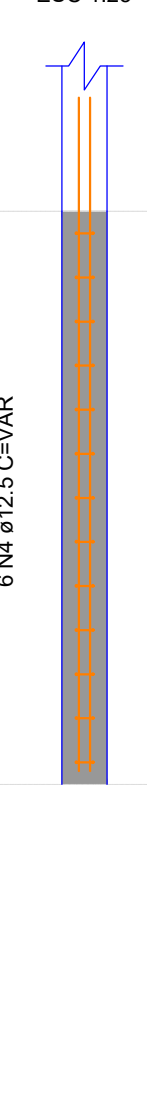
SEÇÃO
ESC 1:20



VISTA H
ESC 1:25



VISTA B
ESC 1:25



RELAÇÃO DO AÇO

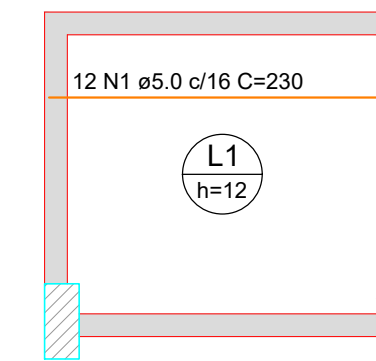
AÇO	N	DIAM (mm)	QUANT	C.UNIT (cm)	C.TOTAL (cm)
CA60	1	5.0	26	65	1690
CA50	2	6.3	12	216	2592
	3	6.3	4	212	848
	4	12.5	12	VAR	VAR

RESUMO DO AÇO

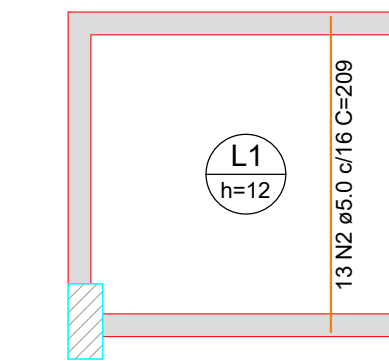
AÇO	DIAM (mm)	C.TOTAL (m)	PESO (kg)
CA50	6.3	34.4	8.45
CA60	5.0	16.9	2.64

PESO TOTAL + 10% (kg)
CA50 39.9
CA60 2.9

Volume de concreto (C-35) = 0.54 m³
Área de forma = 6.06 m²



Armação positiva das lajes do pavimento 1º Pavimento (Eixo X) escala 1:50



Armação positiva das lajes do pavimento 1º Pavimento (Eixo Y) escala 1:50

RELAÇÃO DO AÇO

Positivos X		Positivos Y			
AÇO	N	DIAM (mm)	QUANT	C.UNIT (cm)	C.TOTAL (cm)
CA60	1	5.0	12	230	2760
	2	5.0	13	209	2717

RESUMO DO AÇO

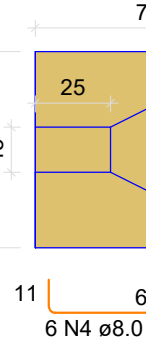
AÇO	DIAM (mm)	C.TOTAL (m)	PESO (kg)
CA60	5.0	54.8	8.45

PESO TOTAL + 10% (kg)
CA60 9.3

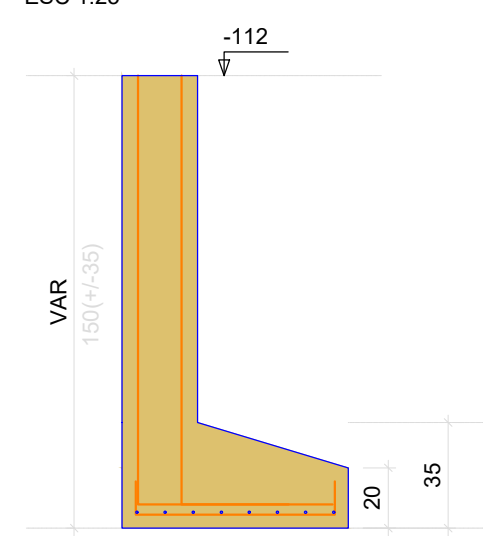
Volume de concreto (C-35) = 0.46 m³
Área de forma = 3.83 m²

S10

PLANTA
ESC 1:25

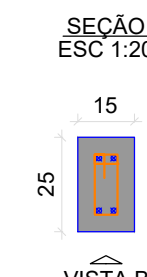
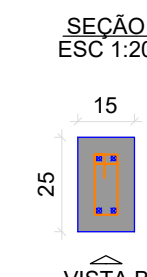
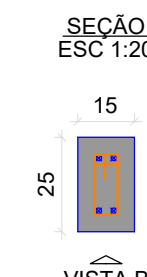
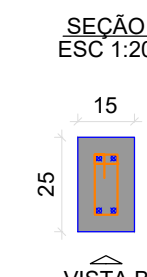


CORTE
ESC 1:25



P10

1º PAVIMENTO - L1



RELAÇÃO DO AÇO

AÇO	N	DIAM (mm)	QUANT	C.UNIT (cm)	C.TOTAL (cm)
CA60	1	5.0	33	55	1815
	2	5.0	12	40	480
	3	5.0	26	67	1742
CA50	4	8.0	6	84	504
	5	8.0	14	74	1036
	6	8.0	12	79	948
	7	8.0	14	69	966
	8	8.0	6	74	444
	9	8.0	6	84	504
	10	8.0	6	64	384
	11	10.0	4	189	756
	12	10.0	4	VAR	VAR
	13	10.0	4	184	736
	14	10.0	4	VAR	VAR
	15	10.0	4	VAR	VAR

RESUMO DO AÇO

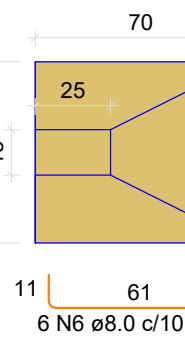
AÇO	DIAM (mm)	C.TOTAL (m)	PESO (kg)
CA50	8.0	47.9	18.91
CA60	5.0	40.4	6.18

PESO TOTAL + 10% (kg)
CA50 47.9
CA60 6.8

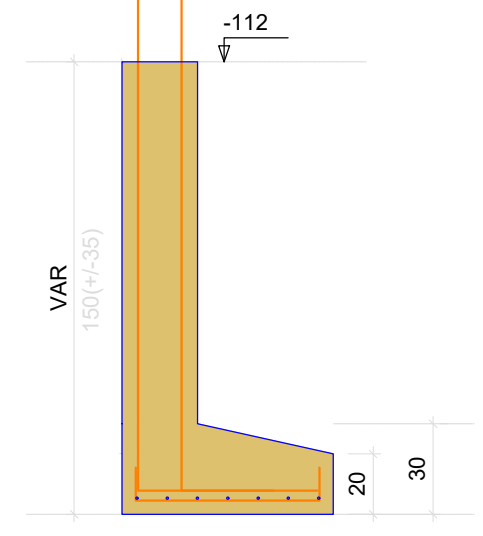
Volume de concreto (C-35) = 0.80 m³
Área de forma = 8.96 m²

S11=S12

PLANTA
ESC 1:25

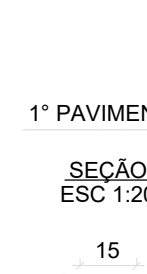
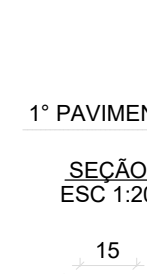
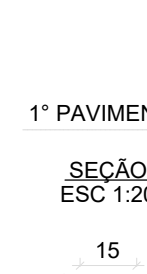
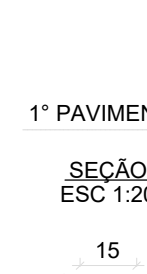


CORTE
ESC 1:25



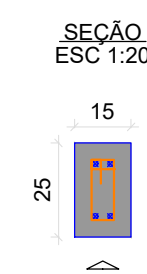
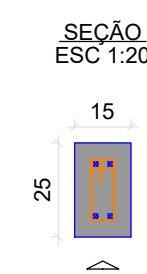
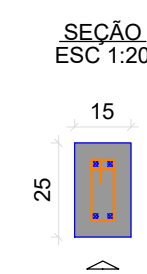
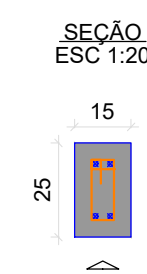
P11

1º PAVIMENTO - L1

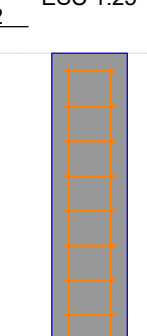


P12

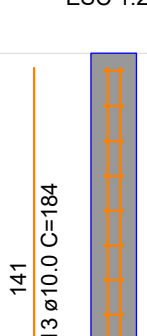
1º PAVIMENTO - L1



VISTA H
ESC 1:25

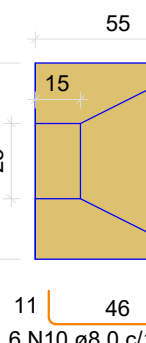


VISTA B
ESC 1:25

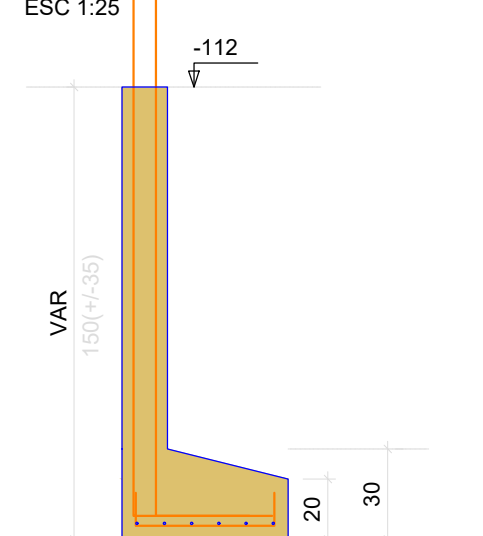


S14

PLANTA
ESC 1:25

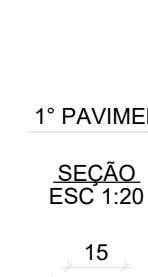
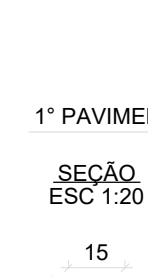
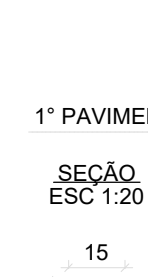


CORTE
ESC 1:25

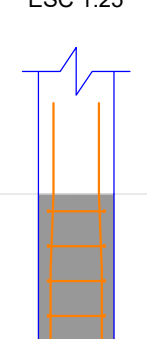


P14

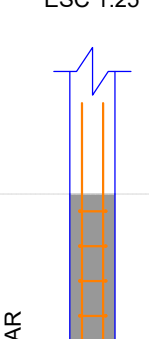
1º PAVIMENTO - L1



VISTA H
ESC 1:25

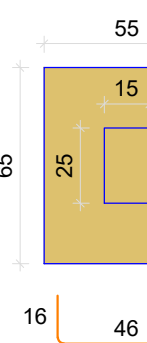


VISTA B
ESC 1:25

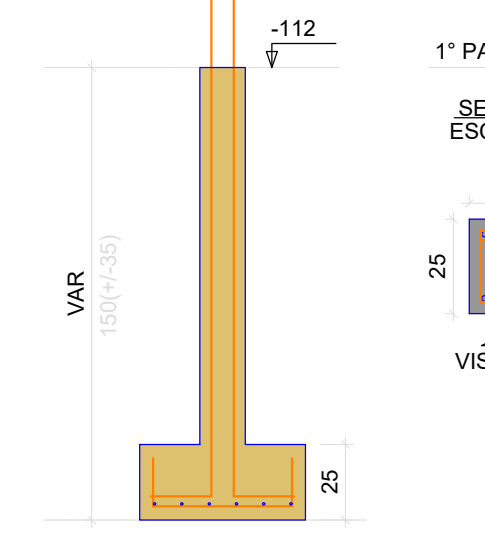


S13

PLANTA
ESC 1:25

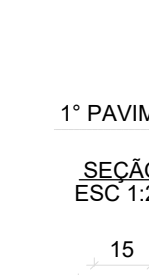
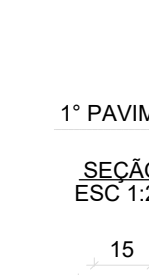
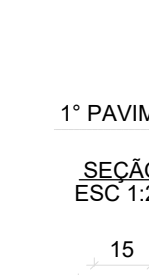
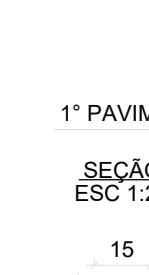


CORTE
ESC 1:25

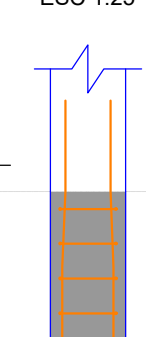


P13

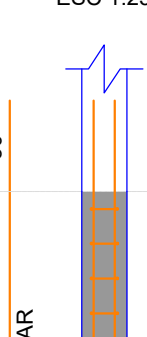
1º PAVIMENTO - L1



VISTA H
ESC 1:25

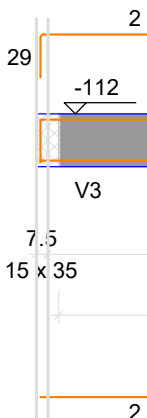


VISTA B
ESC 1:25

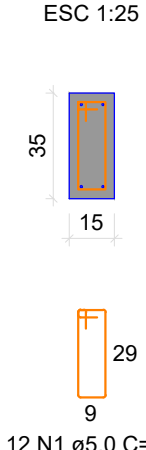


V1

ESC 1:50



SEÇÃO A-A
ESC 1:25

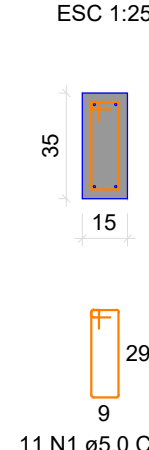


V2

ESC 1:50

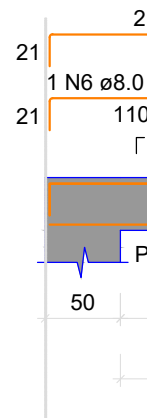


SEÇÃO A-A
ESC 1:25

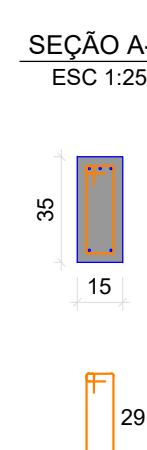


V3

ESC 1:50



SEÇÃO A-A
ESC 1:25

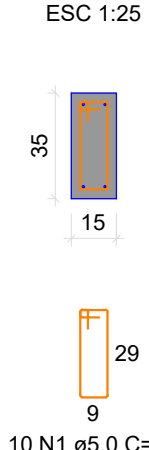


V4

ESC 1:50



SEÇÃO A-A
ESC 1:25



RELAÇÃO DO AÇO

AÇO	N	DIAM (mm)	QUANT	C.UNIT (cm)	C.TOTAL (cm)
CA60	1	5.0	43	87	3741
CA50	2	8.0	4	230	920
	3	8.0	2	274	548
	4	8.0	2	264	528
	5	8.0	2	332	664
	6	8.0	1	129	129
	7	8.0	2	270	540
	8	8.0	2	209	418
	9	8.0	2	243	486

RESUMO DO AÇO

AÇO	DIAM (mm)	C.TOTAL (m)	PESO (kg)
CA50	8.0	40.3	15.91
CA60	5.0	37.4	5.73

PESO TOTAL + 10% (kg)
CA50 17.5
CA60 6.3

Volume de concreto (C-35) = 0.48 m³
Área de forma = 7.79 m²

NOTA: EXECUTAR LASTRO DE CONCRETO MAGRO DE 5cm SOB OS BLOCOS E SAPATAS

STATUS DO PROJETO:

LIBERADO PARA EXECUÇÃO

APROVAÇÃO

Obra: REFORMA E AMPLIAÇÃO DO CENTRO ESPORTIVO DE DOUTOR PEDRINHO
RUA PIONEIROS - B. CENTRO - DOUTOR PEDRINHO/SC

PROJETO ESTRUTURAL - ARQUIBANCADA

CLIENTE: PREFEITURA MUNICIPAL DE DOUTOR PEDRINHO

ELABORADO POR: 
ZANDONA ASSESSORIA E PROJETOS LTDA-EPP
CNPJ Nº: 12.226.008/0001-50 | CREA-SC 103.953-4
END. RUA 1051, Nº 60, SALA 101 - BALNEÁRIO CAMBORIÚ / SC
TEL: (47) 3062-0337

REFERÊNCIA:
DETALHAMENTO DOS BLOCOS
DETALHAMENTO DAS SAPATAS
DETALHAMENTO DA LAJE 1º PAVIMENTO
DETALHAMENTO DAS VIGAS DO 1º PAVIMENTO

Projeto/Equipe técnica:
José Carlos Zandoná
CREA/SC 042.499-5

Responsável técnico: José Carlos Zandoná
Desenho: RS
Revisão /Data: 12.03.2019
Nome do Arquivo

Escala: Und. METROS

REVISÕES

Nº	DATA	DESCRIÇÃO	POR	REV.	APROV.	CLIENTE
01	12.03.2019	REVISÃO DO PROJETO - ANÁLISE C.E.F.	JT	-	-	-

EST
Projeto Estrutural

03.11
PMDP

Doutor Pedrinho
FEVEREIRO/2019